

Section 6: Handcrafts

Stewards: Jan Meiers Mob: 0434 824 807, Deirdre Lee

Entry Fee: 50¢

First \$2; Second \$1

All entries to be in the hands of the Stewards by 9.00am Friday. Entry tickets must be attached to each exhibit by the exhibitor. Please read Show Regulations on pages 10 to 11. **Pavilion doors will be closed at 4.30pm and reopened for exhibit collection at 5.00pm.** Entries to be shown for no more than two years.

Entrant with the best use of this year's theme will receive a prize.

Woodcrafting

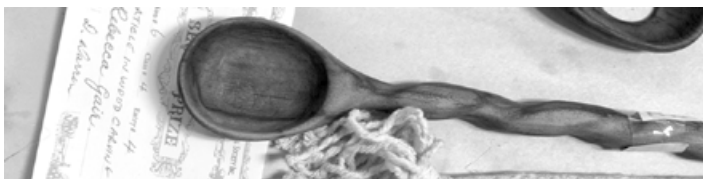
1. Any article in wood turning
2. Any article in wood burning
3. Any article in wood on wheels
4. Any article in wood carving
5. Any article in fretwork or scroll saw
6. Any wooden toy not on wheels
7. Any wooden box (small)
8. Any other wooden article

Champion Exhibit in Woodcrafting, Classes 1 to 8 – Ribbon

Scrapbooking and Paper Craft

9. Scrapbooking – heritage – single or double page
10. Scrapbooking – family – single or double page
11. Scrapbooking – babies – single or double page
12. Scrapbooking – celebrations – single or double page
13. Scrapbooking – any other subject – single or double page
14. Cards – set of 3
15. Quilling – any article
16. Miscellaneous article – any other paper craft

Champion Exhibit in Scrapbooking and Paper Craft
Classes 9 to 16 – Ribbon



Handcrafted Jewellery

17. Necklace
18. Bracelet or bangle
19. Pair of earrings
20. Any other item.

Champion Exhibit in Handcrafted Jewellery, Classes 17 to 20 – Ribbon

Framed Article

21. Picture or plaque, any materials
22. Any framed article in tapestry
23. Any framed article in cross stitch
24. Any framed article in long stitch

Champion Exhibit in Framed Article Classes 21 to 24 – Ribbon

Miscellaneous

25. Any article in leatherwork
26. Any article for Christmas decorations
27. Cushion
28. Coat Hanger, NOT knitted, crocheted, or sewn
29. Shopping Bag or basket, any material
30. Wall Hanging
31. Teddy Bear or Doll
32. Any article of ceramics
33. Any novelty item
34. Any article in fabric painting
35. Any article in any recycled material (material to be named)
36. Any article in any recycled fabric
37. Any article in folk art
38. Article in craft not specified (small) 30cm and under, any dimensions
39. Article in craft not specified (large); over 30cm; any dimensions

Champion Exhibit in Miscellaneous, Classes 25 to 39 – Ribbon

Points: First (2 points); Second (1 point)

Prize for most points in Handcrafts, donated by Deirdre Lee

Prize for the entry with the most effective use of the theme, in Handcrafts, donated by Hazel Herring.